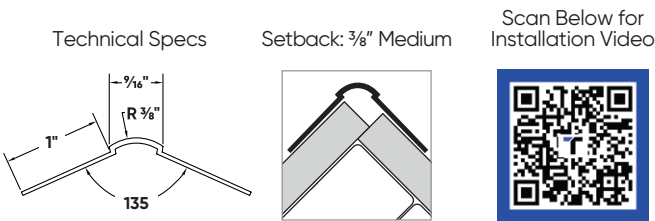


3/8" Medium Bullnose Splayed Corner Bead

If you need a highly protective solution for obtuse angles that's still stylish and modern, look no further – Trim-Tex's 3/8" Medium Bullnose Splayed Corner Bead (formerly known as 350 Bull) is made specifically for off-angles, with a soft rounded profile that adds a contemporary flourish to any corner. This unique bead is flexible enough to accommodate most off-angle applications.

Installation Guide



Before Installation:

Measure, cut and dry fit the bead, leaving a 1/2" gap at the floor.

Step 1:

Coat both the bead and edge of drywall with Trim-Tex 847 Spray Adhesive.

Step 2:

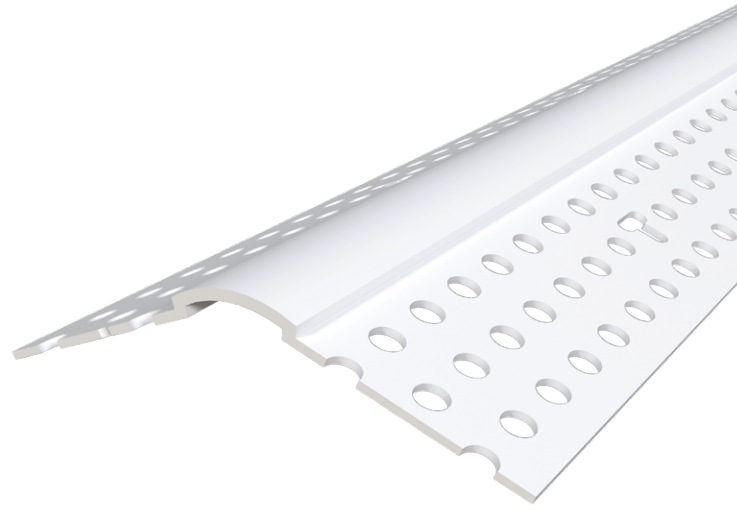
Press the bead in place, applying pressure to the mud legs.

Step 3:

Staple every 6"-8" using 1/2" staples.

Step 4:

Finish with drywall compound.



Step 1:



Step 2:



Step 3:



Step 4:

