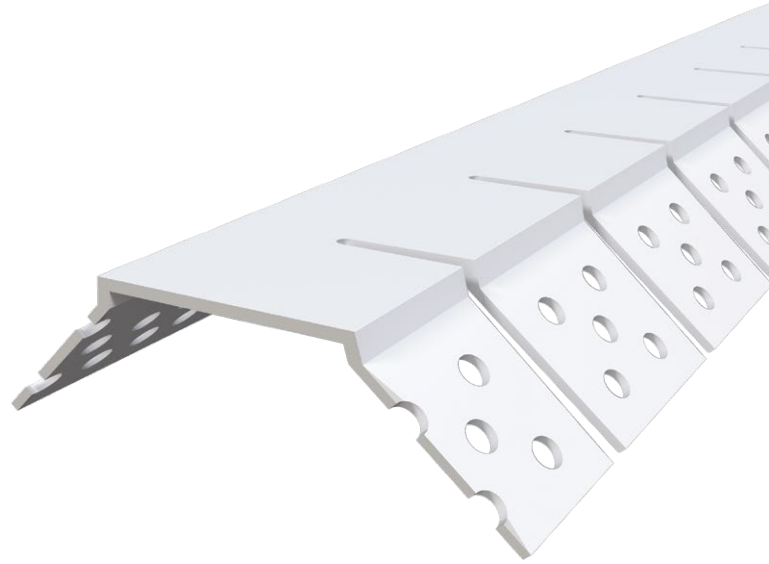


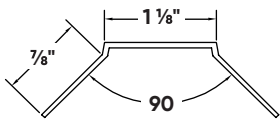
## Chamfer Archway Bead®

A popular style among architects, finishers and interior designers alike, Chamfer Bead gives your corners a modern look with crisp lines and stark shadows. The bead's larger, 1 1/8"-wide chamfered edges can soften any room, and its easy-to-flex archway version can handle openings of any shape.

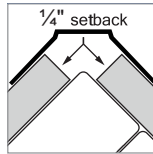


### Installation Guide

Technical Specs



Setback: Chamfer



Scan Below for  
Installation Video



#### Before Installation:

Ensure setbacks are even with the corner edge. Measure, cut and dry fit the bead, leaving a 1/2" gap at the floor.

#### Step 1:

Coat both the bead and edge of drywall with Trim-Tex 847 Spray Adhesive.

#### Step 2:

Press the bead in place, applying pressure to the mud legs.

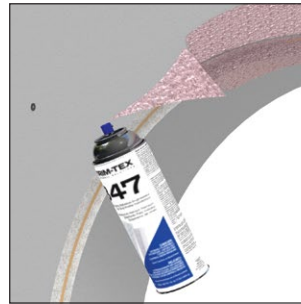
#### Step 3:

Staple every 6"-8" using 1/2" staples.

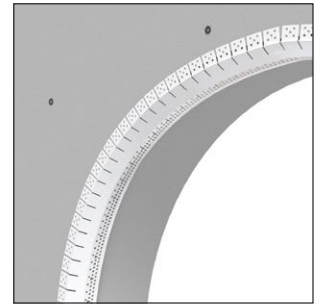
#### Step 4:

Finish with drywall compound.

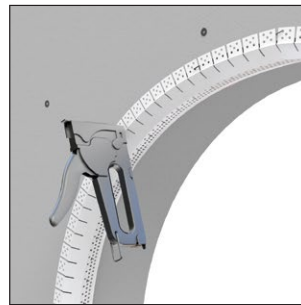
#### Step 1:



#### Step 2:



#### Step 3:



#### Step 4:

