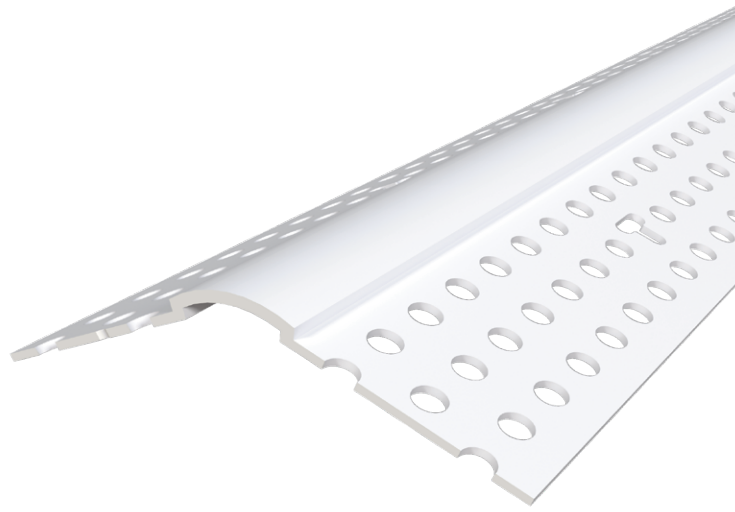


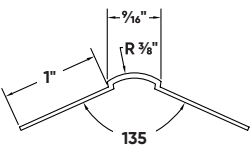
350 Bull® Splayed Corner Bead

Smallest radius bullnose profile at $\frac{3}{8}$ " and made specifically for off angles. This product is flexible enough to accommodate most off angle applications.

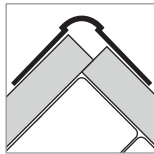


Installation Guide

Technical Specs



Setback: 350 Bull®



Scan Below for Installation Video



Before Installation:

Measure, cut and dry fit the bead, leaving a $\frac{1}{2}$ " gap at the floor.

Step 1:

Coat both the bead and edge of drywall with Trim-Tex 847 Spray Adhesive.

Step 2:

Press the bead in place, applying pressure to the mud legs.

Step 3:

Staple every 6"-8" using $\frac{1}{2}$ " staples.

Step 4:

Finish with drywall compound.

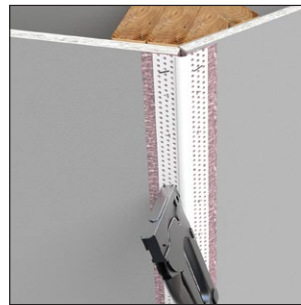
Step 1:



Step 2:



Step 3:



Step 4:

